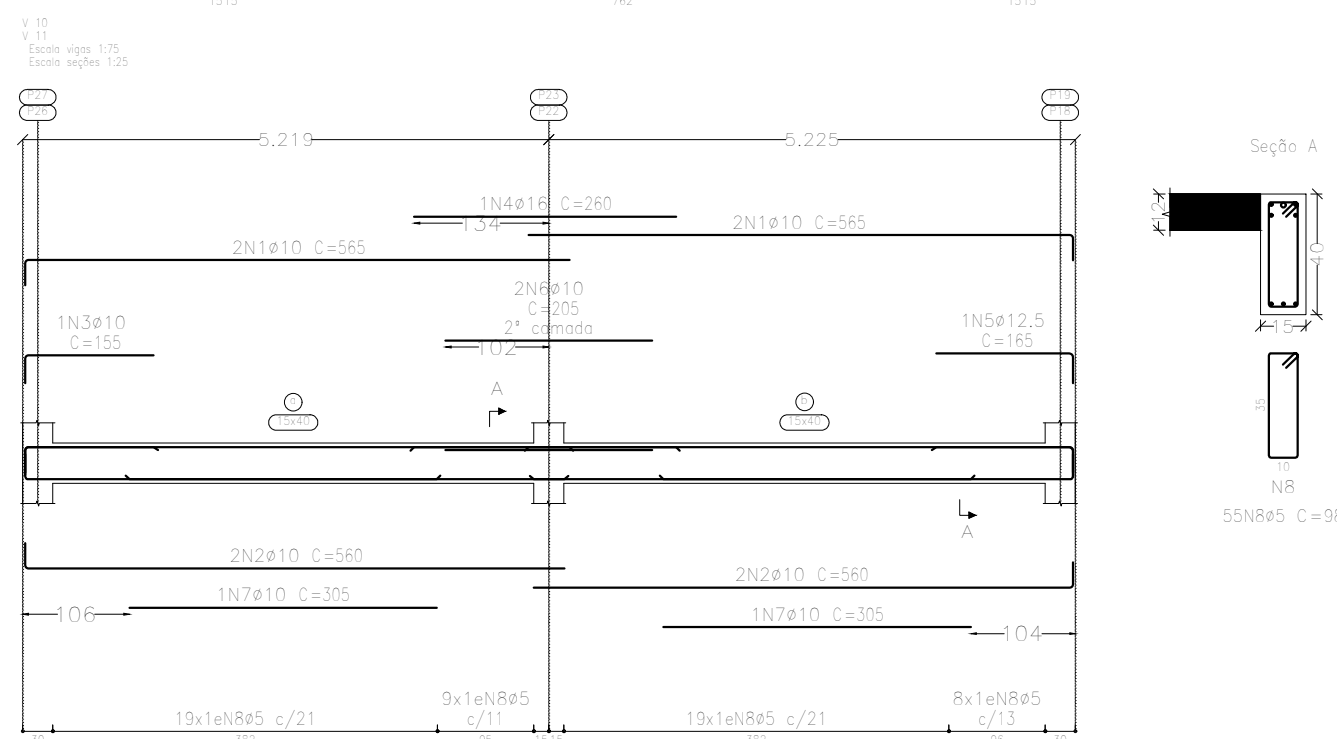
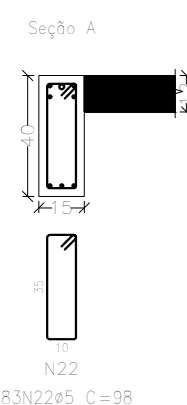
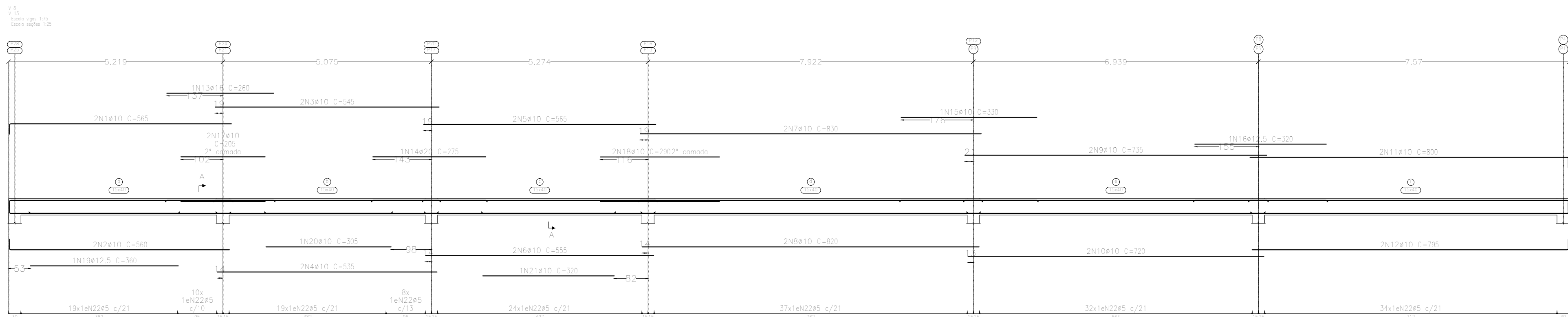
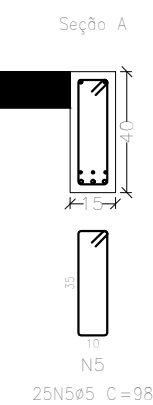
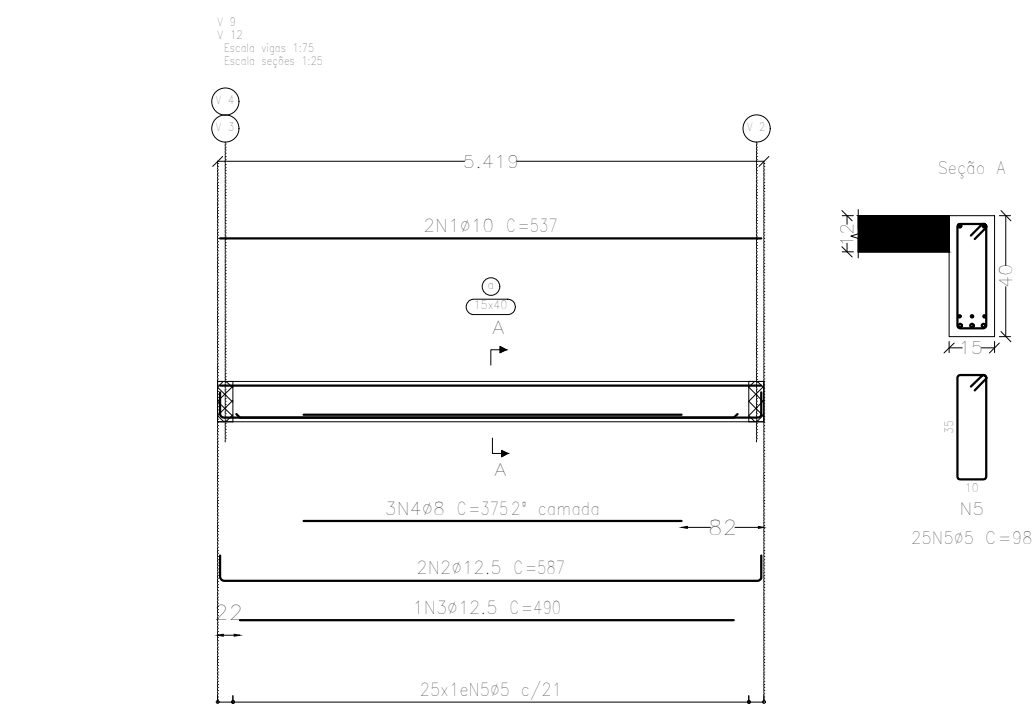
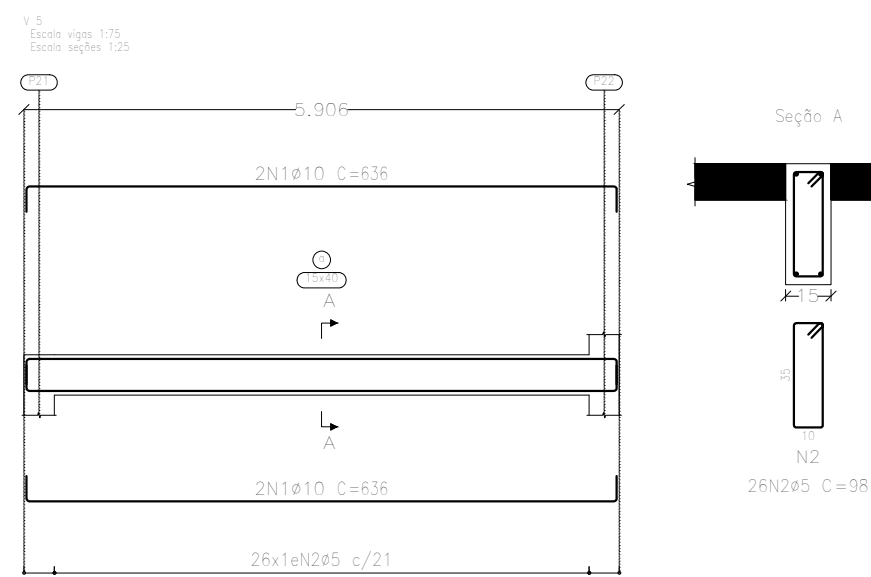
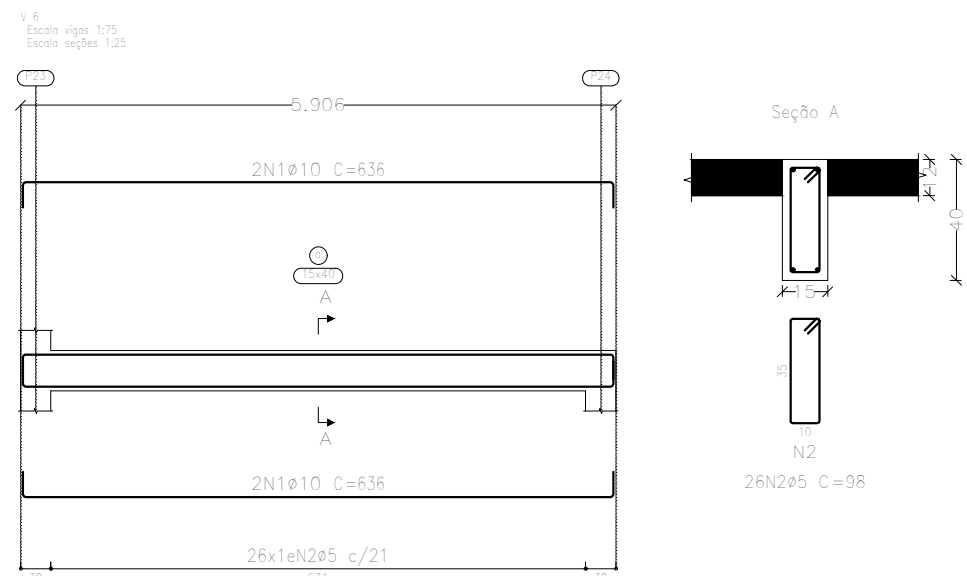
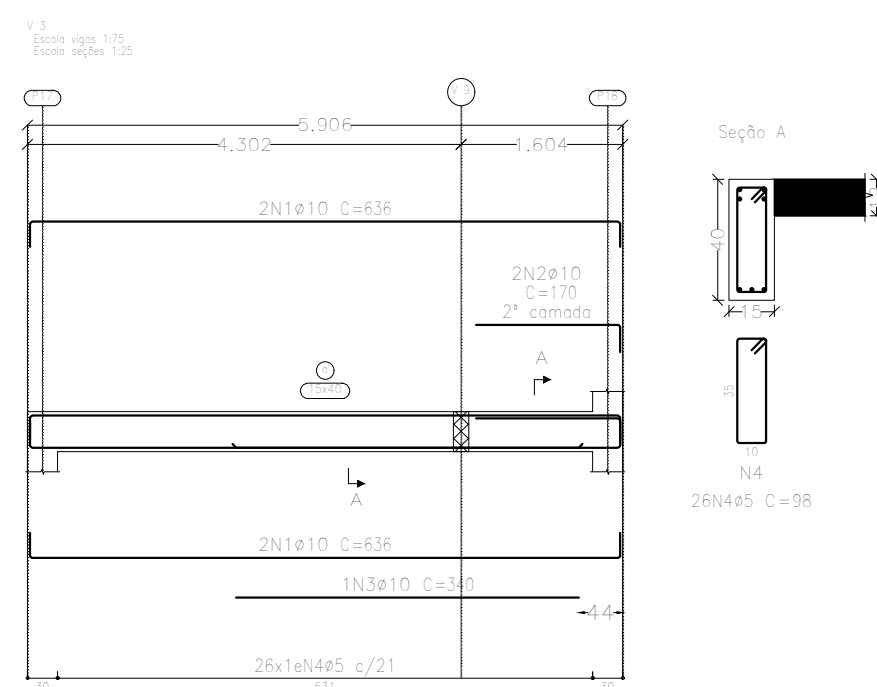
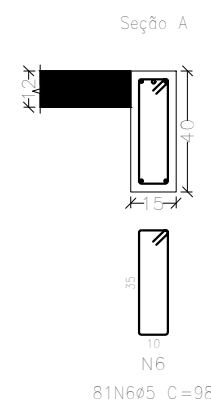
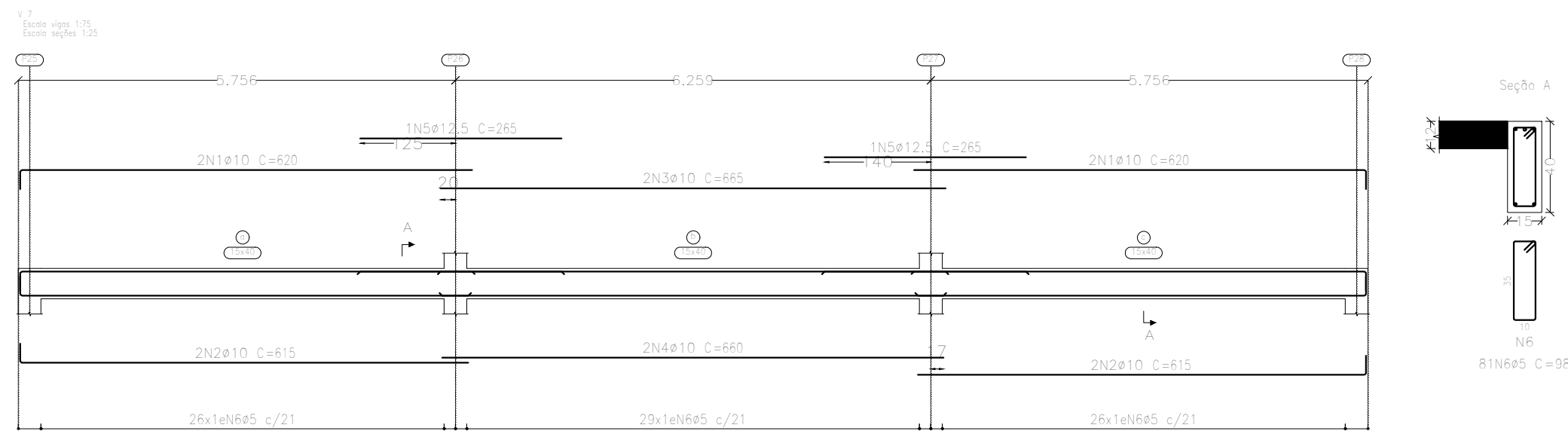
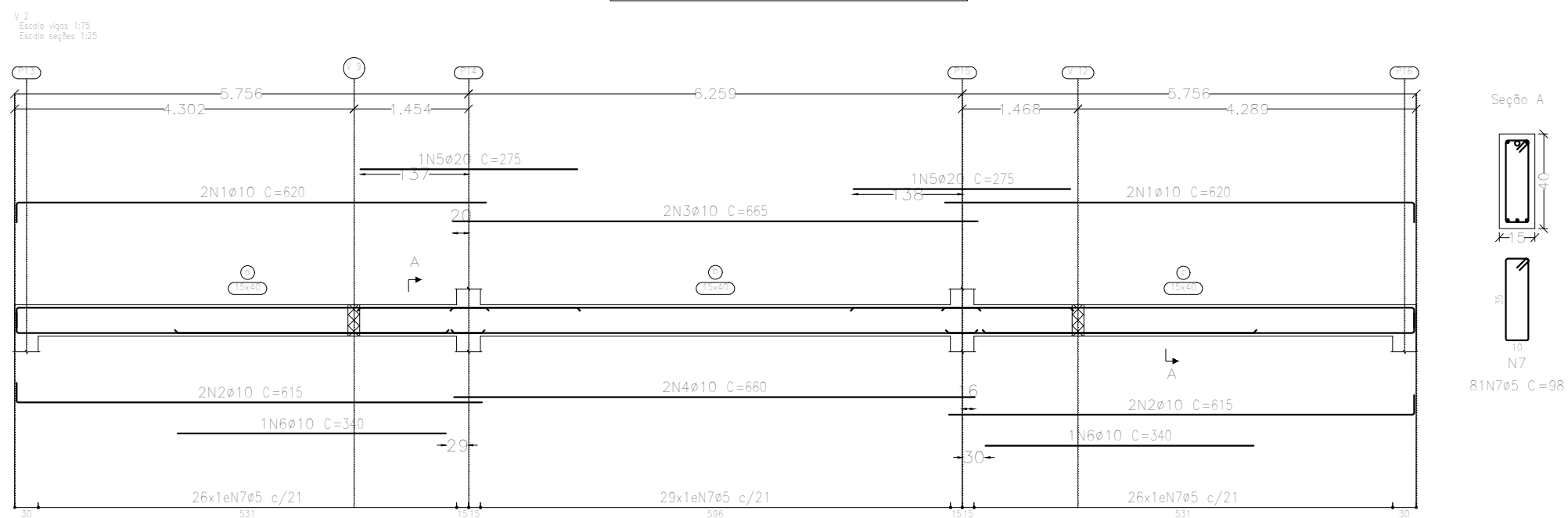
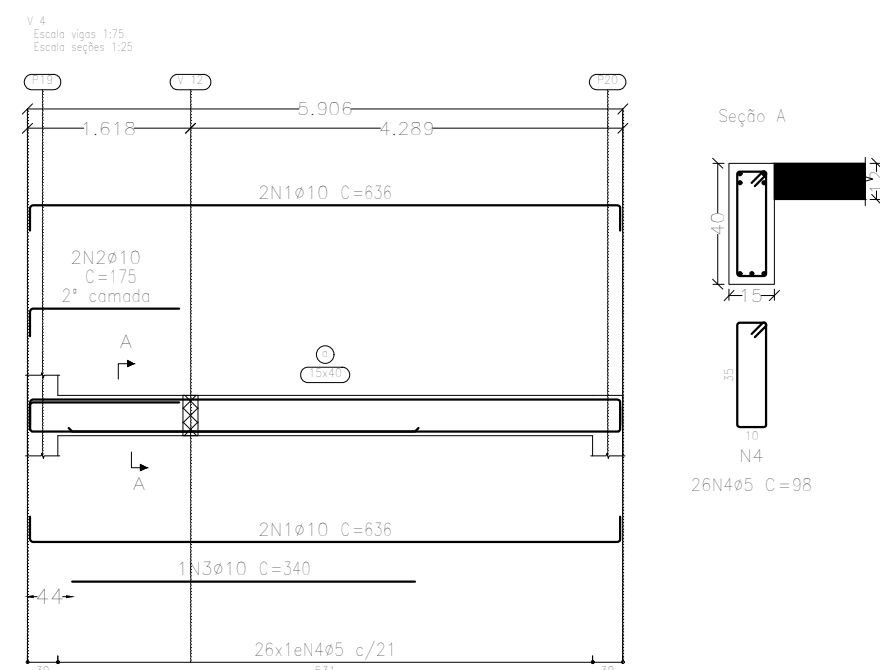


NÍVEL + 3,45 M
Desenho de vigas
Concreto: C20, em geral
Aço das barras: CA-50 e CA-60
Aço dos estribos: CA-50 e CA-60
Escala vigas 1:75
Escala seções 1:25
Escala aberturas 1:20
Cobrimentos: 2,5 cm



Resumo Aço	Comp. total	Peso+10%	Total
CA-50	22,5	10	
ø8	855,8	580	
ø10	55,5	59	
ø12,5	10,4	18	
ø16	11,0	30	697
CA-60	855,5	148	148
ø5			
Total			845

Elemento	Pos.	Diam.	Q.	Esquema (cm)	Comp. (cm)	Total (kg)	CA-50 (kg)	CA-60 (kg)
V 1	1	ø10	8		620	4960	30,6	
	2	ø10	2		665	1330	8,2	
	3	ø10	2		670	1340	8,3	
	4	ø10	4		265	1060	6,5	
	5	ø5	81		98	7938		12,5
					Total+10%	59,0	13,8	
V 2	1	ø10	4		620	2480	15,3	
	2	ø10	4		615	2460	15,2	
	3	ø10	2		665	1330	8,2	
	4	ø10	2		660	1320	8,1	
	5	ø20	2		275	550	13,6	
	6	ø10	2		340	680	4,2	
	7	ø5	81		98	7938		12,5
V 3	1	ø10	4		636	2544	15,7	
	2	ø10	2		170	340	2,1	
	3	ø10	1		340	340	2,1	
	4	ø5	26		98	2548	4,0	
V 4	1	ø10	4		636	2544	15,7	
	2	ø10	2		175	350	2,2	
	3	ø10	1		340	340	2,1	
	4	ø5	26		98	2548	4,0	
V 5	1	ø10	4		636	2544	15,7	
	2	ø5	26		98	2548	4,0	
V 6	1	ø10	4		636	2544	15,7	
	2	ø5	26		98	2548	4,0	
V 7	1	ø10	4		620	2480	15,3	
	2	ø10	4		615	2460	15,2	
	3	ø10	2		665	1330	8,2	
	4	ø10	2		660	1320	8,1	
	5	ø12,5	2		265	530	5,1	
	6	ø5	81		98	7938		12,5
V 8=V 13					Total+10%	57,1	13,8	
	1	ø10	2		565	1130	7,0	
	2	ø10	2		560	1120	6,9	
	3	ø10	2		545	1090	6,7	
	4	ø10	2		535	1070	6,6	
	5	ø10	2		565	1130	7,0	
	6	ø10	2		555	1110	6,8	
	7	ø10	2		830	1660	10,2	
	8	ø10	2		820	1640	10,1	
	9	ø10	2		735	1470	9,1	
	10	ø10	2		720	1440	8,9	
	11	ø10	2		800	1600	9,9	
	12	ø10	2		755	1510	9,8	
	13	ø16	1		260	260	4,1	
	14	ø20	1		275	275	6,8	
	15	ø10	1		330	330	2,0	
	16	ø12,5	1		320	320	3,1	
	17	ø10	2		205	410	2,5	
	18	ø10	2		290	580	3,6	
	19	ø12,5	1		360	360	3,5	
	20	ø10	1		305	305	1,9	
	21	ø10	1		320	320	2,0	
V 9=V 12	1	ø10	2		537	1074	6,6	
	2	ø12,5	2		587	1174	11,3	
	3	ø12,5	1		490	490	4,7	
	4	ø8	3		375	1125	4,4	
	5	ø5	25		98	2450	3,8	
					Total+10%	29,7	4,2	8,4
V 10=V 11	1	ø10	4		565	2260	13,9	
	2	ø10	4		560	2240	13,8	
	3	ø10	1		155	155	1,0	
	4	ø16	1		260	260	4,1	
	5	ø12,5	1		165	165	1,6	
	6	ø10	2		205	410	2,5	
	7	ø10	2		305	610	3,8	
	8	ø5	55		98	5390	8,5	
						Total+10%	44,8	9,4
						(+2)	89,6	18,8
						ø5:	0,0	148,2
						ø8:	9,6	0,0
						ø10:	580,9	0,0
						ø12,5:	59,0	0,0
						ø16:	18,0	0,0
						ø20:	30,0	0,0
						Total:	697,5	148,2

DENIS BOTELHO DA SILVA
Responsável Técnico

AMPLIAÇÃO DO MERCADO MUNICIPAL LERIAN BARROS NO MUNICÍPIO DE ERINEPEMA			 EFICAZ CONSULTORIA E PROJETOS	
AUREIA MARQUES				
MUNICÍPIO DE ERINEPEMA				
TÍTULO				
NÍVEL SUPERIOR Desenho de vigas				
RESPONSÁVEL TÉCNICO	ACESSARLY GANDARA	DATA	INDICADA	07/08
ENR: GENES BOTELHO CREA: 16473-DAAR		NOVEMBRO/2025		